



### MAIN DATA (\*)

Barge type	Ballastable Deck Cargo Pontoon	Horse power	N.A.
Barge function	Deck cargo, Roro cargo	Fire fighting	N.A.
Shipbuilding yard	Nanton Yahua Shipbuilding Co. Ltd Scheepswerf Damen Grichem	Pumps ballast	2 x 400 m <sup>2</sup> /hrs
Built/Delivery	2015	Ballast tank	17 pcs 13.751 m <sup>3</sup>
Flag/Port of registry	Sloveia / Koper	Propulsion type	N.A.
Lenght o.a.	91,50 m / 300 ft	Deadin/Max capacity	9600 ton
Breadth	27,40 m / 900 ft	Deck load	20 ton/m <sup>2</sup>
Maximum draught	4,85 m	Generator	Caterpillar C4.4 94 Kw
Gross/Net tonnage	4161 / 241		
Bollard pull	N.A.		
Call sign/imo No.	9695389		
Accomodation	N.A.		
Class notation	DNV - GL - 100 AT Pontoon		
Max Tug speed	N.A.		
Main engine	N.A.		

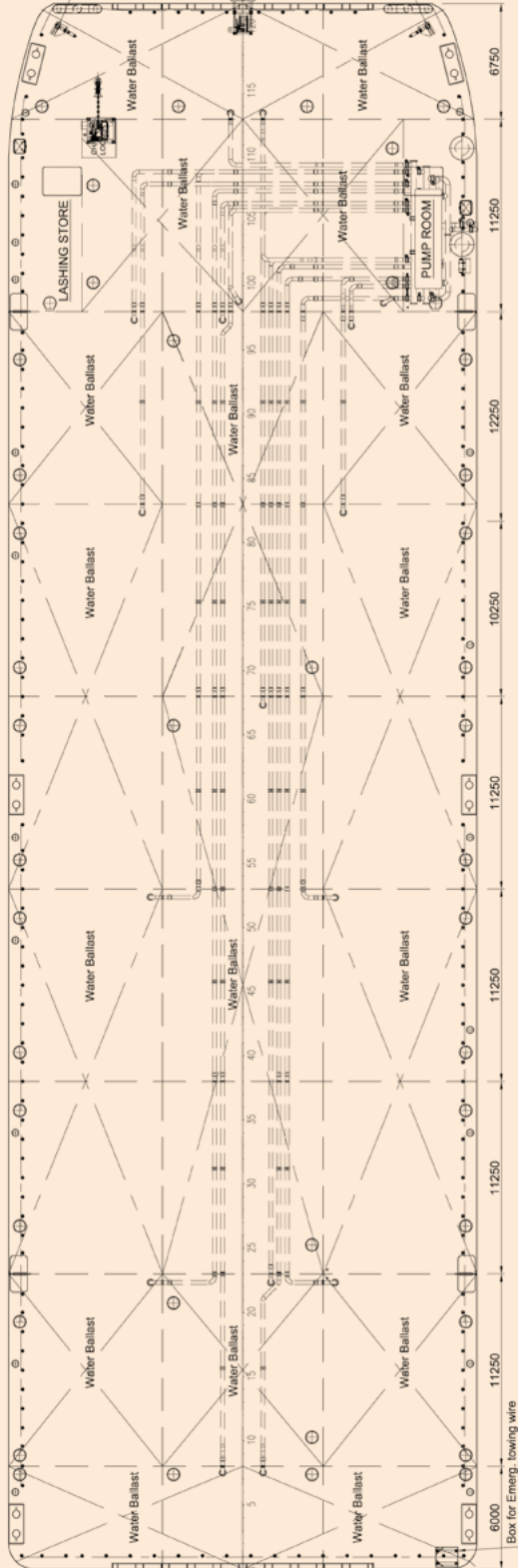
(\*) For all other informations, drawings, ect. pls contact main office in Koper, Slovenia

N.B.: Whilst care has been taken in the preparation of these documents, the data and/or information referred to herein are purely indicative and are not contractually binding. They must be checked with reference to the specific operations and are subject to change. No liability is accepted by the owners for any errors which may exist in this document.

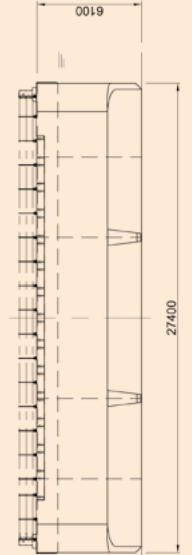
SIDE VIEW



TOP VIEW



AFT VIEW



FRONT VIEW

