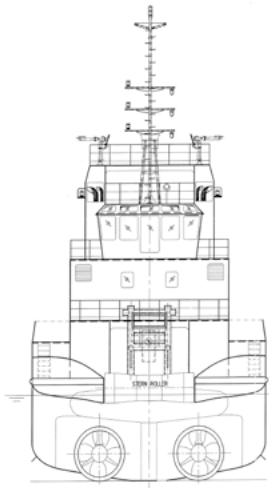



**MAIN DATA (\*)**

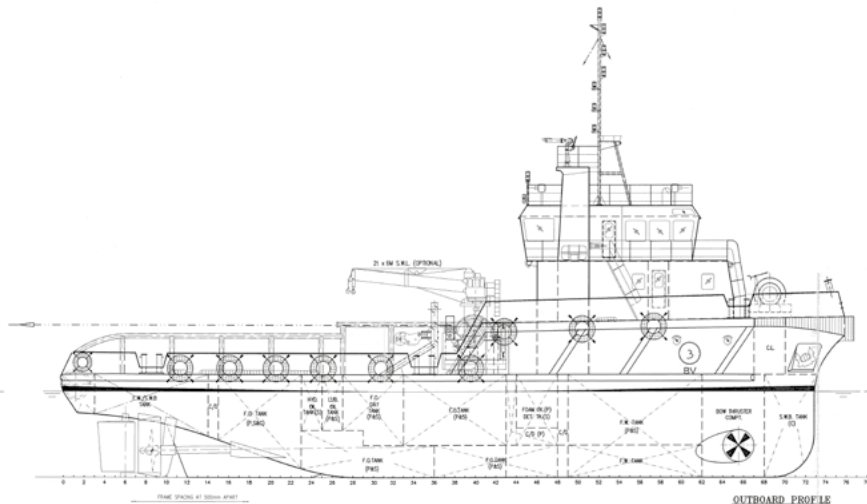
Tug type	Aht ocean going tug	Horse power	5000 BHP
Tug function	Ocean and harbour towage	Fire fighting	FIFI 1
Shipbuilding yard	Easter marine shipbuilding Sibul-Malaysia	Generator	3 x cummins 150 Kw
Built/Delivery	2008	Propulsion type	Double screw
Flag/Port of registry	LIMASSOL- CYPRUS	Towing hook	NO
Lenght o.a.	38 m	Wire capacity	1000 m Ø 52 mm
Breadth	11,8 m	Radio apparatus	GMDSS A3
Maximum draught	3,8 m	Navigational equip.	3 GPS, 2 Radars, 1 Ais, 1 Nautex, 3 UHF, 1 SSB, 2 Immarsat C, 1 MF/HF, 1 Girocompass
Gross/Net tonnage	497 / 149	Fuel oil capacity	160 tonn
Bollard pull	61 tonn	Rec-oil capacity	N/A
Call sign/imo No.	<b>5BLM5 / 9492995</b>	Fresh water capacity	50 tonn
Accomodation	10 persons	Foam capacity	2 x 2,5 m <sup>2</sup>
Class notation	BV tug - FIFI1 - Aht	Main deck area	121,5 m <sup>2</sup>
Max tug speed	12 Knots	Navigation	Unrestricted
Main engine	2 x Niagata 6MG28HX		

(\*) For all other informations, drawings, ect. pls contact main office in Trieste, Italy

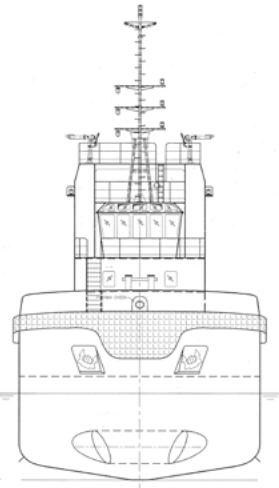
N.B.: Whilst care has been taken in the preparation of these documents, the data and/or information referred to herein are purely indicative and are not contractually binding. They must be checked with reference to the specific operations and are subject to change. No liability is accepted by the owners for any errors which may exist in this document.



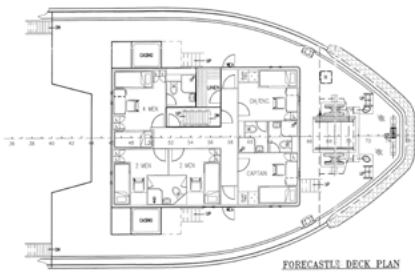
STERN VIEW



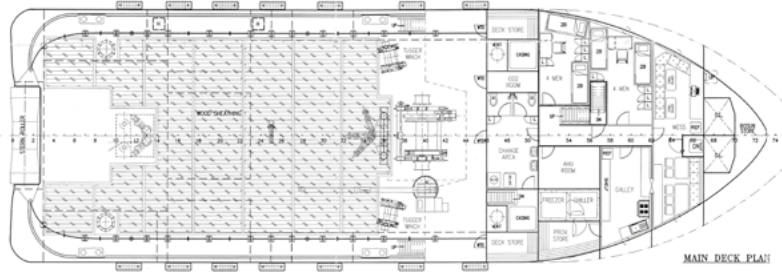
OUTBOARD PROFILE



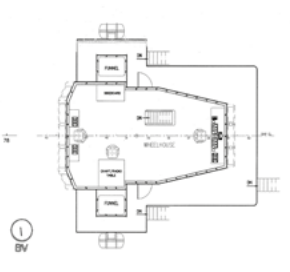
FRONT VIEW



FORECASTLE DECK PLAN



MAIN DECK PLAN

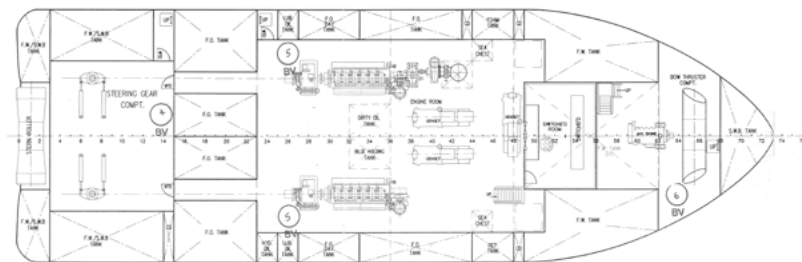


1 BV

### PRINCIPAL DIMENSIONS

LENGTH OVERALL	38.00 M
LENGTH WATERLINE	36.30 M
LENGTH B.P.	33.40 M
BREADTH MOULDED	11.80 M
DEPTH MOULDED	4.80 M
MAX. DRAFT MOULDED	3.80 M
COMPLEMENT	18 MEN
FUEL OIL	300.0 TONNES
FRESH WATER	150.0 TONNES
TOTAL POWER	5000 SHP
TRIAL SPEED	12.0 KNOTS
BOLLARD PULL (AHEAD)	60.0 TONNES

3 BV



BELOW MAIN DECK